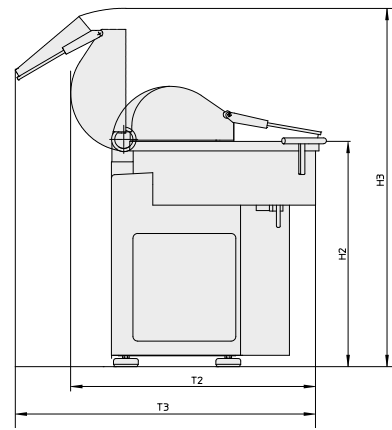
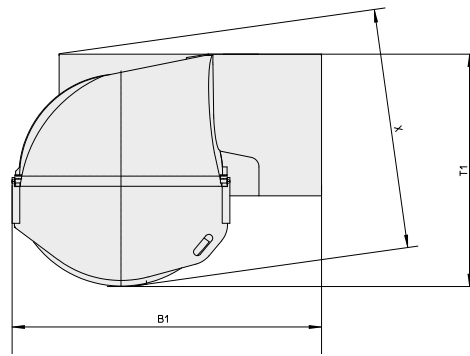


Measurements

- H2 = 983 mm / 38.7 in
- H3 = 1515 mm / 59.6 in
- T1 = 910 mm / 35.8 in
- T2 = 1080 mm / 42.5 in
- T3 = 1340 mm / 52.8 in
- B1 = 1220 mm / 48.0 in
- X = 940 mm / 37.0 in



Knife head



Temperature sensor



Auto-Command 4000 (optional)

Standard equipment

- Operation via knee switches
- Changeable and balanceable knife head
- See-through noise absorbing cover made of special plastic
- Separate electrical cabinet made of stainless steel with integrated main switch
- Switch-off for temperature and operating time
- PT 100 Temperature Sensor integrated into scraper
- Noise insulation
- Greasing point

Additional equipment

- Control of unbalanced state
- Various knife systems
- Up to 9 switch-offs for temperature and operating time
- Cross switches with operator's board
- Cable duct
- Number of revolutions steplessly adjustable (only with AC-Motor)
- 4 bowl speeds, steplessly adjustable (only with AC-Motor)
- Easy lift for cover
- Lock of noise absorbing cover
- Cover damping for noise absorbing cover
- Noise insulation version
- Water drain screw

Control: Auto-Command 1000

- 21,5" touch wide-screen LED color display
- Stainless steel housing
- Computer based automatic control
- Display of all technical parameters
- Program control
- 30 programs with up to 10 steps each
- Switching off or on when reaching up to 9 pre-programmable temperature or time values
- User-friendly logical design
- Display of maintenance and service intervals

Optional Auto-Command 2000, 3000, 4000

- 24.0" touch wide-screen LED color display
- Waterproof design IP 69
- Advanced recipe control with display of required ingredients and recipes
- User management
- Data recording
- Production plan
- Second workstation outside the production room possible
- Connection to MES or ERP systems possible

Motor types

AC-8

- 6 steplessly programmable knife speeds
- 2 reverse mixing speeds
- 2 separate bowl speeds
- Frequency-controlled 3-phase motor

Ultra

- 2 knife speeds
- 2 forward mixing speeds
- On request: 2 reverse mixing speeds
- 2 separate bowl speeds
- All drive systems with 3-phase motors

Rasant

- 2 knife speeds
- 2 bowl speeds
- All drive systems with 3-phase motors